

# Company portrait MPS Ltd.

**M**anufacturing systems engineering

**P**roduktion engineering

**S**ervice

**Your service provider in mechanical engineering**

## Details to mps...



- ▶ MPS stands for mechanical engineering, production engineering and services
- ▶ Establishment in May 1998
- ▶ Chief executive is Holger Winnai
- ▶ Our service portfolio includes:
  - ▶ Services
  - ▶ Reconstruction, reconditioning and relocation of machines
  - ▶ Technical consulting
  - ▶ manufacturing and module assembly

## Numbers, details and facts

- ▶ **Revenue:** 5.000.000 € in 2021
- ▶ **Employees:** 40 (December 2021)
- ▶ **Quality:** Certification in accordance to DIN EN ISO 9001:2015
- ▶ **Locations:**
  - 71686 Remseck
  - Neckaraue 25 (headquarters)
  - 66914 Waldmohr
  - Industriestraße 1b (branch southwest )



# Headquarters

71686 Remseck, Neckaraue 25



Branch Southwest

66914 Waldmohr, Industriestrasse 1b



# Overview of our product and range of services



- ▶ **Complete reconstruction of production plant (area machining)**
- ▶ **Complete Reconditioning of available production plants (focus machining)**
- ▶ **Consulting support**
- ▶ **Preparation of expert report**
- ▶ **Engineering order planning, order processing**
- ▶ **Overall responsibility for location transfer**

# Our product and range of services in detail



## **Complete Reconditioning of available production plants (main focus machining)**

- ▶ Manufacture of special spare parts, if necessary (according to own construction or drawing template)
- ▶ Delivery
- ▶ Mounting
- ▶ Documentation
- ▶ Create acceptance report

# Our product and range of services in detail



## **Consulting support**

- ▶ For internal planning task to build up and/or relocation of new production capacity
- ▶ Efficiency analyze of available machines/Production lines (Area machining)

## **Preparation of expert report**

- ▶ about productive operation available manufacturing plants
- ▶ Budget determination for reparation, preventive maintenance and new acquisition

## **Engineering order planning, order processing**

- ▶ Technical purchasing execution and coordination
- ▶ Personal coordination for processing new machines and reconstruction.
- ▶ Order planning and scheduling for new machines and reconstruction.



# Our product and range of services in detail



## Overall responsibility for location shifting

- ▶ Individual plants
- ▶ Complete production lines
- ▶ Complete assembly plants

## This package includes the following performance points:

- ▶ Solely responsible takeover of entire logistic transport, including the required vehicles, transportation equipment and insurance (if required)
- ▶ Coordination of qualified mounting personals and machines producers.
- ▶ Disposition of special vehicles, truck and mobile crane ect.
- ▶ Commissioning (mechanical, electrical) with machine capability inspection
- ▶ Purchase support of functional machines and plants.
- ▶ Dispose of machinery and equipment with evidence.

## Performance example:

### Capabilities truck with special trailer

## Truck Mercedes-Benz Actros with special trailer for machine transports

With our equipment we conduct machine transports for you. Thereby you benefit from execution „one-stop“.

- crankable rear
- drivable ramp for 25 to
- inside height 3,10 m
- pluggable stanchion for the form fit for heavy load, frap boxes for heavy-duty chains

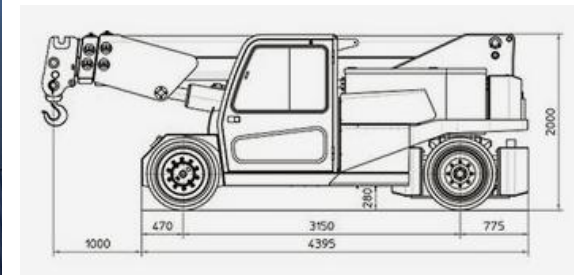
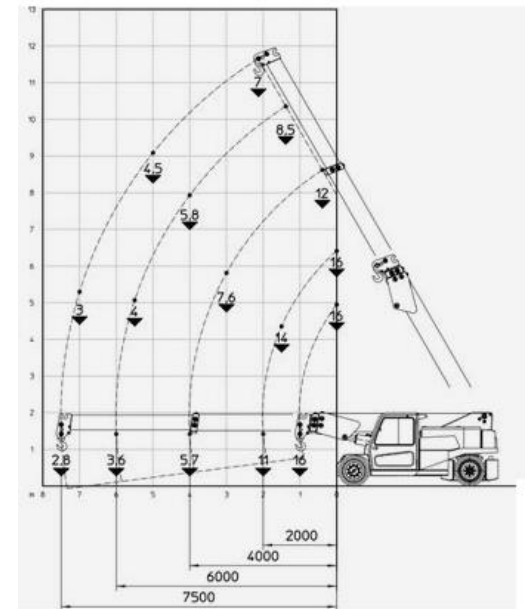


Performance example:

Capabilities cabin-controlled portable crane

## Cabin-controlled portable crane JMG Cranes MC160

(carrying capacity max. 16 T)



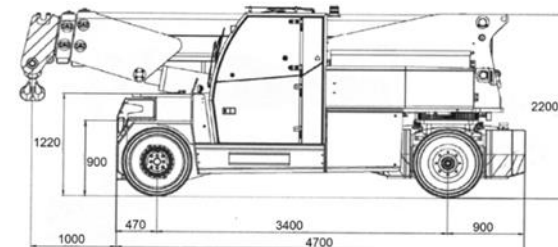
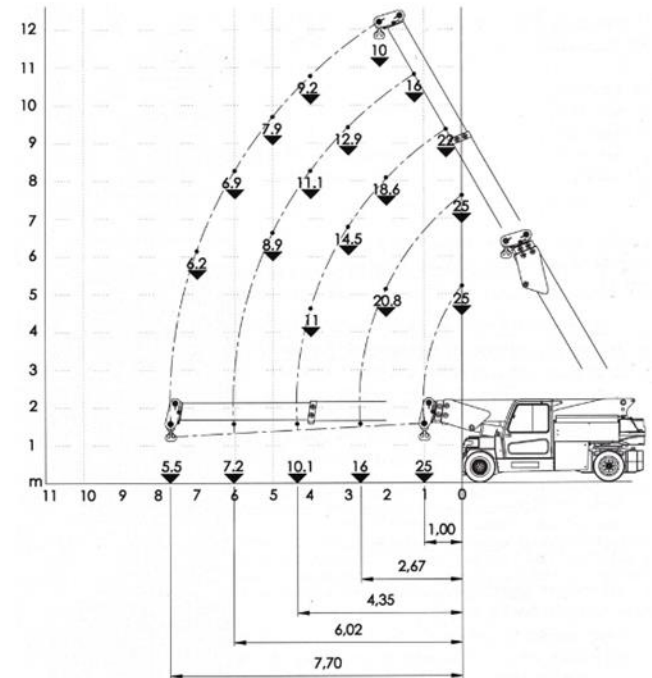


Performance example:

Capabilities cabin-controlled portable crane

## Cabin-controlled portable crane JMG Cranes MC250

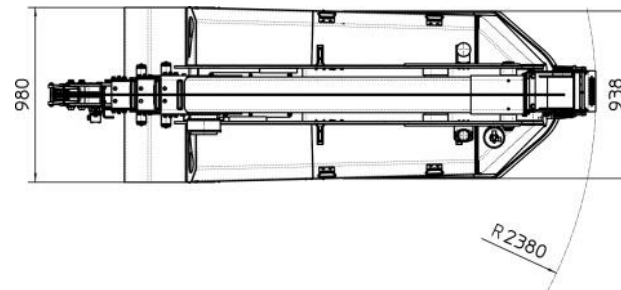
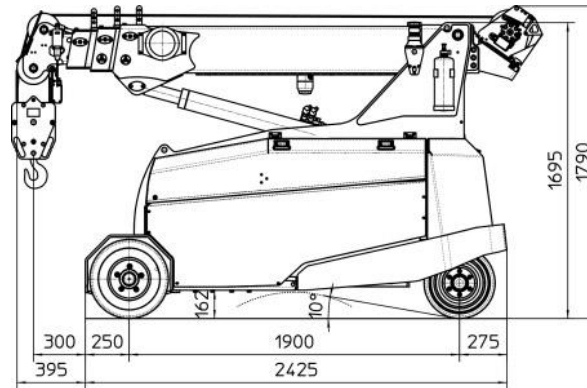
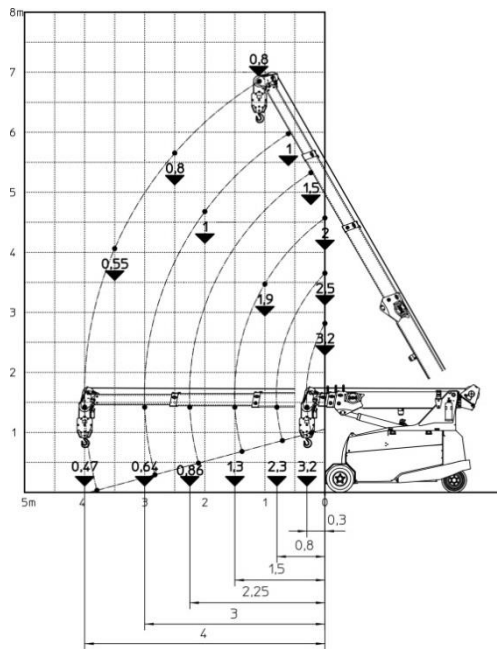
(carrying capacity max. 25 t)



# Performance example:

## Capabilities mini crane

### Mini crane



Performance example:

Transfer and reconstruction flat head assembly





## Performance example:

### Deassembly and reassembly transfer processing

Deassembly and reassembly  
of a Mauser Krauseco transfer  
processing cylinder head  
preprocessing including  
implementing and machine  
capability inspection  
(MFU Cmk 1.67).



# Performance example:

## Roboter programming

Disassembly and reassembly  
with implementing a robot  
cell with 150 tool holder.





# Performance example:

## Contribution 38 T press

Contribution of a 38 T press  
with 60 T chassis.



## Performance example:

### Disassembly and Reassembly SMG press

Disassembly and Reassembly  
with implementing of a 1300 T  
stage press from SMG in  
Hungary for a German client.





## Performance example:

### Disassembly and Reassembly machine facilities with robots

Disassembly and Reassembly  
of beld conveyor,  
linkings, robots und  
machine facilities, support  
trial operation, robots-  
programming for the  
commissioning or  
optimising.



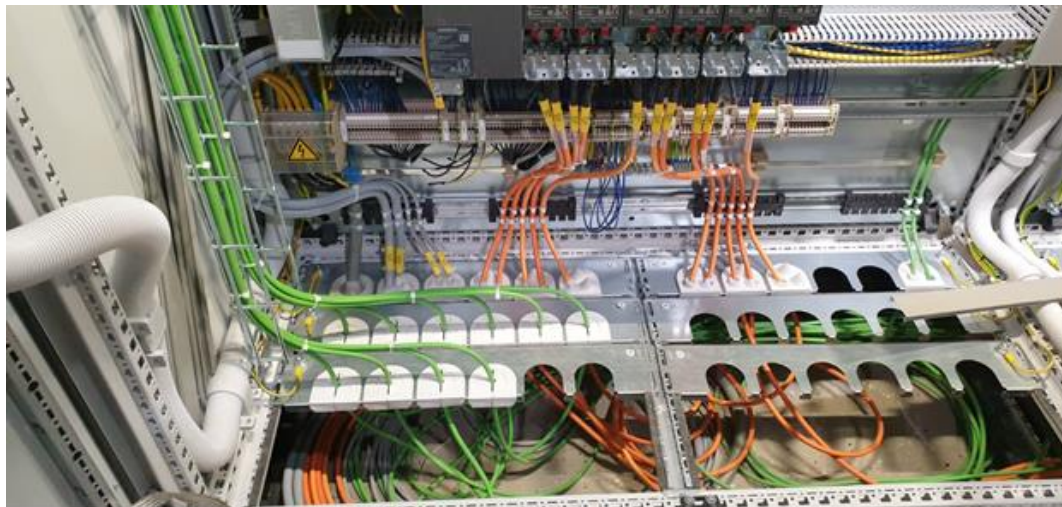
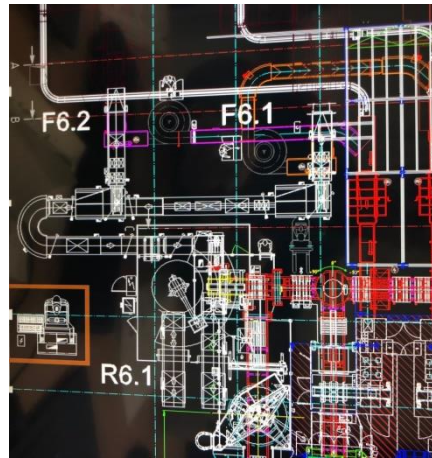


## Performance example:

**New assemblies accounting to CAD LAYOUT of Palletizing technology and Conveyor belt systems** (mechanically, pneumatic, electric, including commissioning)

### Worldwide assembly of:

Palletizing technology,  
Conveyor belt systems in  
Food- and Non-Food-area  
for different customers



Performance example:

Set-up factory infrastructure

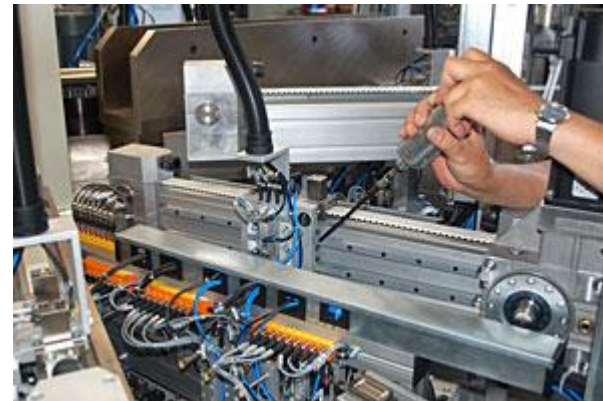




## Performance example: qualified employees for operations like:

### Support maintenance, setup and installation of electrical und mechanical constructions:

- electrotechnology
- mechanics
- hydraulic systems
- pneumatics
- special purpose machinery manufacture, steel manufacture, ...



### Checks and service:

- DGUV 3 (German social accident insurance, place-unchanging electrical devices)
- thermography
- crane DGUV 52
- stock facility DGUV Regel 108-007
- winch, liftig and drawing device DGUV 54
- others on request



**Thank you for your attention!**

**MPS GmbH**

Headquarters  
Neckaraue 25  
71686 Remseck

Director  
Holger Winnai

Telefon +49 (0) 7146 / 87 30 - 40  
Fax +49 (0) 7146 / 87 30 - 46

E-Mail  
Internet

**MPS GmbH**

Branch Southwest:  
Industriestr. 1 b  
66914 Waldmohr

Branch Manager  
Peter Krämer

Telefon +49 (0) 6373 / 50883 - 0  
Fax +49 (0) 6373 / 50883 - 29

info@mps-remseck.de  
www.mps-remseck.de